

tala.

DIGITAL CATALOGUE EU/UK

2019



CONTENTS

ABOUT

- 03 - Our Story
- 04 - Conservation Through Beauty
- 05 - Our Impact So Far
- 06 - Our Methods
- 07 - Our Components
- 08 - Retail
- 10 - Projects
- 14 - Partnerships

CLASSIC COLLECTION

- 17 - Introduction
- 18 - Globe, Crown & Pluto
- 19 - Lurra, Candle & Pygmy

FEATURE COLLECTION

- 23 - Introduction
- 24 - Gaia, Elva & Tetra
- 25 - Totem I, Totem III & Squirrel Cage
- 26 - Porcelain I, Porcelain II & Porcelain III

PORCELAIN

- 29 - Introduction
- 30 - Oval, Oblo, Enno & Nova
- 31 - Oval Ceiling Light
- 32 - Oblo Ceiling Light
- 33 - Enno Ceiling Light
- 34 - Noma Ceiling Light

Tala Studios
 25b Vyner Street
 London, E2 9DG
 T: +44 (0) 20 3026 3246
 E: customerservice@tala.co.uk
 www.tala.co.uk

Instagram @tala
Twitter @wordoftala
Facebook @talaHQ

VORONOI

- 37 - Introduction
- 38 - Voronoi I, Voronoi II, Voronoi III
- 40 - Voronoi I Ceiling Light
- 41 - Voronoi II Ceiling Light
- 42 - Voronoi III Ceiling Light

FIXTURES

- 45 - Introduction
- 46 - Oak, Walnut, Brass & Graphite Pendants
- 47 - Voronoi & Linear Ceiling Plate

POD

- 48 - Introduction
- 49 - Large POD & Small POD

RESOURCES

- 50 - Compatible Dimmers
- 52 - Contacts

Tala is a registered trademark.
 All product descriptions in this Tala brochure are intended as a general guide to our range. As such, dimensions and specifications are subject to change without notice and do not form any part of a contract. All stated dimensions are nominal references and Tala accepts no liability for issues arising from a reliance of guide data to the extent permitted by law.

VAT Number: 182754681



OUR STORY

Tala is an award-winning lighting brand, founded on the premise that good design can help mitigate climate change. From our London-based studio, we explore the tension between sustainability, technology and design through our wide-ranging collections.



Co-founders from left to right: William Symington, Max Wood, Joshua Ward

A seamless switch

Our in-house research and development team and engineering lab combine the best of British design with superior componentry. On average, a Tala LED lamp uses 90% less energy than a traditional incandescent lamp, and it won't need replacing for 10-15 years.

Every idea starts with a seed

We donate a percentage of our revenue to reforestation programmes in the UK, the US and around the world. By choosing Tala, you are helping to restore a healthy planet for future generations.

Built to last

From the functional to the decorative, our LED lamps and accompanying fixtures illuminate interiors around the world. Our full range can be found at some of the finest showrooms and boutiques. And with the team now counting over 50 passionate people in London, New York and China, the future is bright.



CONSERVATION THROUGH BEAUTY

Energy-efficient hardware is just the start of our mission to help mitigate climate change. Our founding promise, Conservation Through Beauty, reminds us to take our responsibility as a manufacturer seriously. To constantly improve our practices, lower our environmental footprint, and restore natural ecosystems.

Reforestation helps us reduce carbon emissions and increase our impact.

In the UK, we partner with The Heart of England Forest on building and protecting a vast, new unbroken woodland of native, broad-leaf trees in the middle of England.

In the USA, we partner with the National Forest Foundation to restore ecosystems across the country by planting in areas where reforestation addresses the greatest ecological need, such as those severely affected by forest fires.

We recently brought WeForest into our portfolio of charity partnerships to maximise our impact on forest restoration by addressing underlying social issues. The project we're supporting is in the Khasi Hills of India, which benefits the local population through assisted natural regeneration and sustainable livelihood development.

40,029

trees planted

327,945,797

kWh of electricity saved

450,667

incandescent lamps replaced

123,501

tonnes of carbon emissions prevented

Based on the following assumptions:

*Each Tala lamp sold is replacing an equivalent lumen output incandescent light

*Electricity prices - £0.15 per kWh (UK); \$0.12 per kWh (US)

*CO2e emissions factors - 0.28307 kg CO2/kWh (UK); 1.222 lbs CO2e/kWh (US)

*Lights are switched on for 12 hrs a day, 7 days a week, 52 weeks a year



OUR METHODS

The way we make our lamps is central to our commitment to sustainability.

All our products are designed in the U.K. and manufactured by our trusted partners in China. Our in-house Design and Engineering teams oversee everything from the driver technology through to the glass moulds.

Our London-based testing lab is a hub for clients to visit and experience our work first hand.



OUR COMPONENTS



Sapphire substrate: Our straight filament designs contain sapphire substrate which allows greater heat dissipation and transparency than the market standard, resulting in a longer-lasting and more even dispersion of light.

Phosphor coating: We have carefully selected the phosphor coating so that it is tuned to the exact colour temperature and CRI we specify.

Glass: Glass: Carefully chosen for maximum transparency and minimal scratching.

Drivers: Our custom technology allows our lamps to be dimmed down to 5% with trailing and leading-edge dimming systems.

Inspection: Each lamp is stress-tested on our maturation racks for a minimum of 3 hours.



tala.

PORCELAIN BULBS
New for Autumn / Winter 2017
from £80

LIGHTING COLLE
Exclusive to Heal's
from £209

DESIGNED BY

Charles Lethe

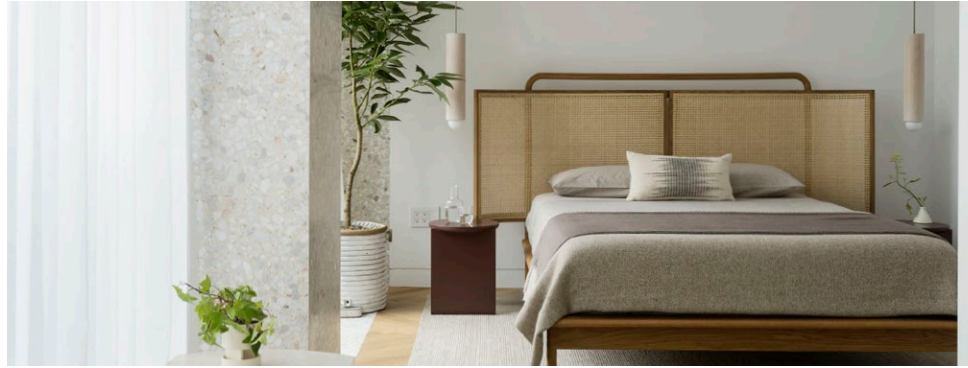




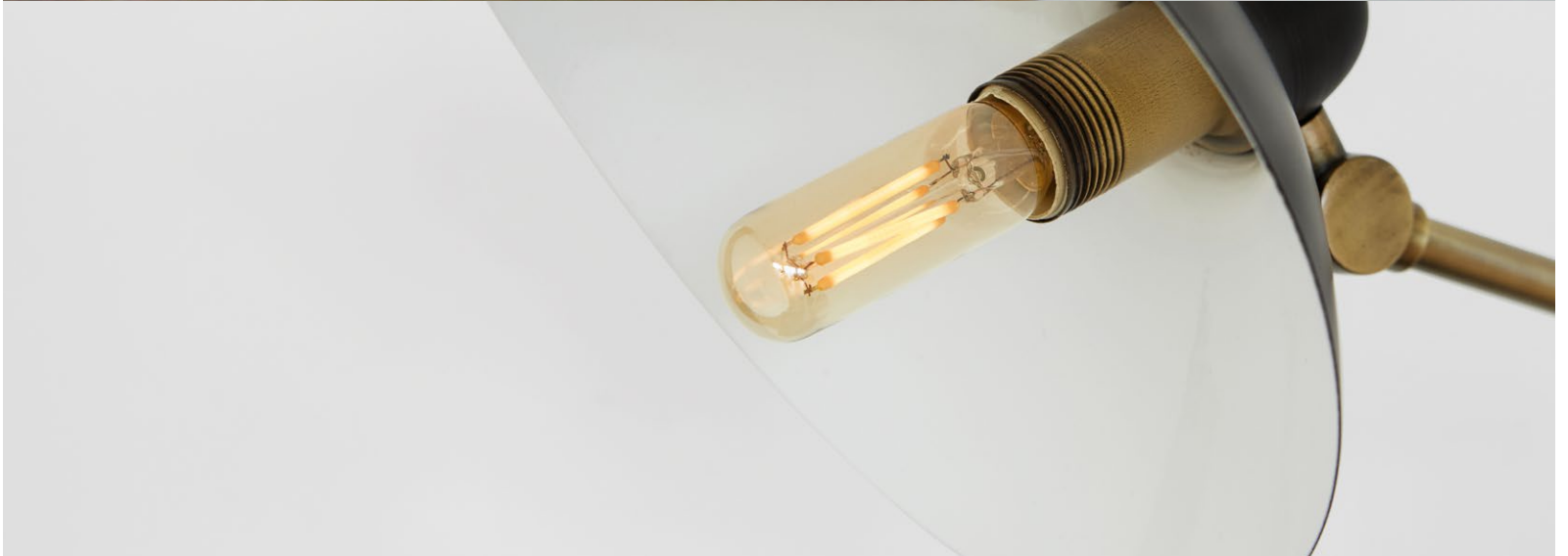
Top: Voronoi II in Brass pendants at Misi, New York City, Photo by Eduard Hueber
Bottom: Voronoi I and II in Brass pendants at Hunan Slurp, New York City. Photo by Montse Zamorano



Voronoi II in Brass pendants at Radisson Blu Edwardian, Manchester. Photo by Andrew Beasley



Top: Porcelain II in Workstead fixture at The Bryant, New York. Photo by Matthew Williams
Bottom: Detail of Liminal Collection by Lindsey Adelman. Photo by Lauren Coleman
Left: Porcelain II for l'Aviva home, Piedra Collection



Top: Crown, Private Residence in London
Bottom: Lurra, Private Residence in London



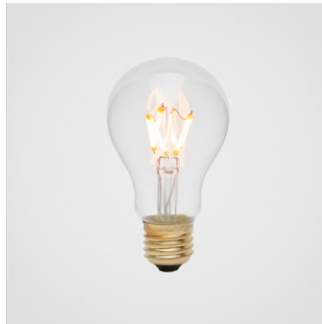
CLASSIC COLLECTION

This versatile collection of functional lamps is designed to retrofit most standard fittings and fixtures. Built from superior components, the result is an unparalleled performance and long-lasting quality.



GLOBE

6W
2500K
480 Lumens
240V
E27 Base
CRI 95
Clear



CROWN

3W
2500K
300 Lumens
240V
E27 Base
CRI 95
Clear



PLUTO

3W
2200/ 2500K
240 Lumens
240V
E14 Base
CRI 95
Tinted/Clear



LURRA

3W
2200K
240 Lumens
240V
E27 Base
CRI 95
Tinted



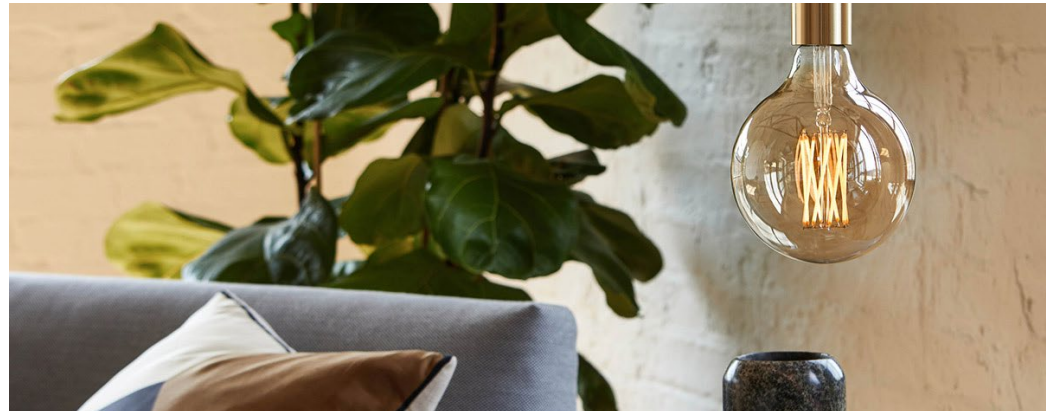
CANDLE

4W
2500K
320 Lumens
240V
E14 Base
CRI 95
Clear



PYGMY

2W
2200K
130 Lumens
240V
E14 Base
CRI 95
Tinted



Typ: Perforation II in Mahoeit pendants
Bottom: Cais in Brass pendant



FEATURE COLLECTION

With a warm, amber glow and playful forms, these exposed lights lend a touch of statement style to any interior. Their E27 screw bases ensure versatility and easy pairing with a variety of fixtures.

FEATURE COLLECTION

**GAIA**

6W
2200K
480 Lumens
240V
E27 Base
CRI 95
Tinted

**ELVA**

6W
2200K
480 Lumens
240V
E27 Base
CRI 95
Clear/Tinted

**TETRA**

3W
2500K
200 Lumens
240V
E27 Base
CRI 95
Clear

**TOTEM I**

3W
2200K
240 Lumens
240V
E14 Base
CRI 95
Tinted

**TOTEM II**

4W
2200K
320 Lumens
240V
E27 Base
CRI 95
Clear/Tinted

**SQUIRREL CAGE**

3W
2200K
240 Lumens
240V
E27 Base
CRI 95
Tinted

All available in sets with pendants and ceiling plates, or sold in parts.



PORCELAIN II

3W	240 Lumens	E14 Base
2700K	240V	CRI 95
		Matte White



PORCELAIN II

6W	540 Lumens	E27 Base
2700K	240V	CRI 95
		Matte White



PORCELAIN III

6W	540 Lumens	E27 Base
2700K	240V	CRI 95
		Matte White

Porcelain II & III:
Available in sets with pendants and ceiling plates, or sold in parts.



Top: Enno in Oak pendants, Anna Jones Studio

Bottom: Enno in Brass pendants, Voronoi II in Brass pendants, Private Residence in London. Photo by Chris Snook
Right: Porcelain II in Workstead fixture at The Bryant, New York. Photo by Matthew Williams

PORCELAIN

The distinctive shapes in this range stem from the primary geometries found in modern architecture, particularly the Bauhaus school. With their warm glow and matte white finish, these unique and characterful lamps create an atmosphere of serene harmony in any space.





OVAL

6W
2700K
540 Lumens
240V
E27 Base
CRI 95
Matte White



OBLO

6W
2700K
540 Lumens
240V
E27 Base
CRI 95
Matte White



ENNO

6W
2700K
540 Lumens
240V
E27 Base
CRI 95
Matte White



NOMA

6W
2700K
540 Lumens
240V
E27 Base
CRI 95
Matte White

OVAL CEILING LIGHT



SINGLE LAMP

6W

240V

CRI 95

2700K

E27 Base

Matte White

540 Lumens

Available in sets with lamps, pendants and a ceiling plate, or sold separately.

Please enquire for custom configurations. Shown above in one and two set configuration.

OBLO CEILING LIGHT



SINGLE LAMP

6W

240V

CRI 95

2700K

E27 Base

Matte White

540 Lumens

Available in sets with lamps, pendants and a ceiling plate, or sold separately.

Please enquire for custom configurations. Shown above in one and two set configuration.

ENNO CEILING LIGHT



SINGLE LAMP

6W

240V

CRI 95

2700K

E27 Base

Matte White

540 Lumens

Available in sets with lamps, pendants and a ceiling plate, or sold separately.

Please enquire for custom configurations. Shown above in one and two set configuration.

NOMA CEILING LIGHT



SINGLE LAMP

6W

240V

CRI 95

2700K

E27 Base

Matte White

540 Lumens

Available in sets with lamps, pendants and a ceiling plate, or sold separately.

Please enquire for custom configurations. Shown above in one and two set configuration.



Voronoi III in Brass pendants

VORONOI

The organic forms in this collection stem from the voronoi pattern found in the forest canopy and throughout nature. We created a 3D model of the pattern and smoothed its edges to simulate natural erosion over time. Our designers then introduced the singular spiral of LED filament to mimic the Fibonacci sequence seen in pine cones and ferns. The result is a unique collection of statement mouth blown lamps, carved by nature.





VORONOI I

2W	80 Lumens	CRI 95
2200K	240V	Tinted
	E27 Base	



VORONOI II

3W	120 Lumens	E27 Base
2200K	240V	CRI 95
		Tinted



VORONOI III

5W	220 Lumens	E27 Base
2200K	240V	CRI 95
		Tinted

VORONOI | CEILING LIGHT



SINGLE LAMP

2W

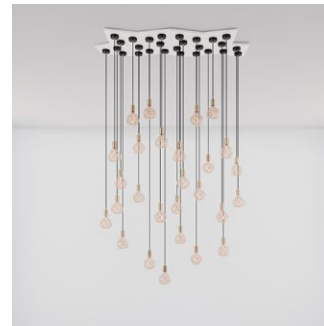
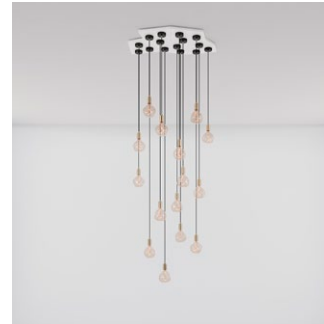
80 Lumens

E27 Base

2200K

240V

CRI 95



Available in sets with lamps, pendants and a ceiling plate, or sold separately.

Designed to tessellate in a variety of arrangements, please enquire for custom configurations.

Shown above in one, five and nine set configurations.

VORONOI II CEILING LIGHT



SINGLE LAMP

2W

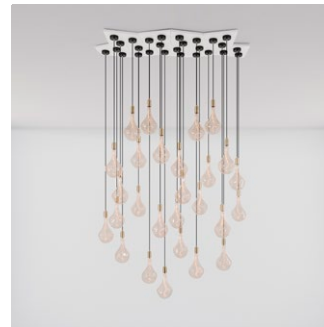
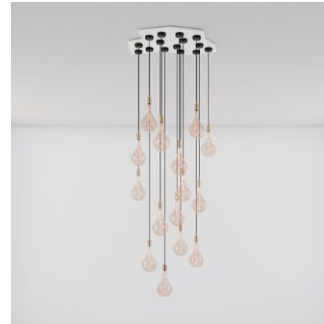
120 Lumens

E27 Base

2200K

240V

CRI 95



Available in sets with lamps, pendants and a ceiling plate, or sold separately.

Designed to tessellate in a variety of arrangements, please enquire for custom configurations.

Shown above in one, five and nine set configurations.

VORONOI III CEILING LIGHT

**SINGLE LAMP**

5W

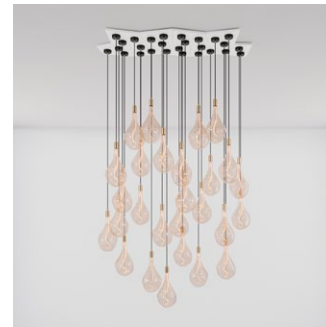
220 Lumens

E27 Base

2200K

240V

CRI 95



Available in sets with lamps, pendants and a ceiling plate, or sold separately.

Designed to tessellate in a variety of arrangements, please enquire for custom configurations.

Shown above in one, five and nine set configurations.





FIXTURES

Built from materials known for their durability and malleable characteristics, our fixtures are designed to complement our range of lamps. From FSC-grade pure American oak and walnut to fully milled brass, we work with the finest natural resources available.

A true celebration of material properties, our fixtures are simple in spirit and versatile in nature. All come with a 3-metre black threaded cord made from a silicone that's designed to minimise kinks.





OAK KNUCKLE PENDANT

240V
Max Wattage 60W
Luminaire Class I
Pendant 50 x 80 mm
Ceiling Rose 80 x 25mm



WALNUT KNUCKLE PENDANT

240V
Max Wattage 60W
Luminaire Class I
Pendant 50 x 80 mm
Ceiling Rose 80 x 25mm



BRASS PENDANT

240V
Max Wattage 60W
Luminaire Class I
Pendant 40 x 65 mm
Ceiling Rose 80 x 25mm



GRAPHITE KNUCKLE PENDANT

240V
Max Wattage 60W
Luminaire Class I
Pendant 40 x 65mm
Ceiling Rose 80 x 25mm

All pendants available in sets with lamps, ceiling plates, or sold in parts.

VORONOI CEILING PLATE



1mm thick sheet steel

Folded & welded edges

350 x 334 x 30mm

White powder coating

Conceived as a modular system, this elegant ceiling plate houses clusters of Voronoi lamps in groups of three. Its geometric shape is designed to tessellate in a variety of arrangements, mimicking the forest canopy inspiration behind the range.

Available in sets with Voronoi range lamps and pendants.

LINEAR CEILING PLATE



1mm thick sheet steel

Folded & welded edges

900 x 180 x 20mm

White powder coating

A simple, hard-wearing solution that makes it easier than ever to hang four pendants in a uniform row. Each cable is securely hooked into position, ensuring consistent spacing between each light.

Available in sets with Porcelain range and Feature collection lamps and pendants, or sold in parts.

POD

For our retail partners, we offer a modular POD system for displaying our range in store.

There are two sizes of free-standing display which can be combined in a variety of ways to suit your exact space and assortment.



Tala Studios

LARGE POD



1000 x 480 x 2200mm

Material: Powder coated steel

Colours: Matte white or matte black

SMALL POD



480 x 480 x 2200mm

Material: Powder coated steel, oak

Colours: Matte white or matte black

Features: In-built dimmers, bulb box with 8 lamp holders, patterned ceiling for hanging pendants.

COMPATIBLE DIMMERS

We've tested the most widely used dimmers on the market to guarantee the best possible performance with our lamps. The dimmers below have proven themselves time and time again for their quality, compatibility and uniformity. For best results, use only one type of Tala lamp per dimmer and do not mix different lamp brands. For the most up to date list of our compatible dimmers please visit tala.co.uk/faqs/

RECOMMENDED: Varilight - V-pro, Dmax by Domintell - 420BLE, Lutron - RA2Select

COMPATIBLE:

Hamilton - LEDIT-B100

EPV - Dimmtronic PAB 315

EPV - Dimmtronic M1000/3.3

Wandsworth Electrical- WLC IR1x150TD

Wandsworth Electrical- WLC 4x150TD

Wandsworth Electrical- RTD120

Zano - ZBAR

Eltako - EUD12NPN-UC

Eltako - EUD61NPN-UC

Mode - Tiger

Tecnel- TE7636

Busch-Jaeger - 6523U-102

Dmax by Domintell -420SL

Gira - System2000

Lumex - LT1D450LSWE

Osram-HTI DALI 315

LE Controls - 6TEP400

LE Controls - 6TEP200

Kaoyi- KLD-100EV-1

Kaoyi -KLD-100-E4

Kaoyi -KLD-100EV-F

Casambi- CBUTED

Rako - RAK-4T

Rako - RMT500

Vadsbo - VD200/300

Vadsbo - LD200/220

RESOURCES

CONTACTS

BELGIUM

Beluce, Els Vandenberghe
+32 5034 6186
info@beluce.be

FRANCE

Ouhlalaaa, Sophie:
+33 6130 96271
lionel@ouhlalaaa.fr

GERMANY

Tala Deutschland,
Marc Ulrich Stüvecke
+49 30 3101 4250
deutschland@talaled.com

ICELAND

Lumex, Egill Birgisson
+35 4568 8388
egill@lumex.is

IRELAND & N.IRELAND

LightSource, Anthony Brown
+44 28 9066 6615
info@lightingenterprises.com

ITALY & SWITZERLAND

Viola Consultings
Milly Lotti
+41 76587 0234
milly@tala.co.uk

GREECE

Sirecled Hellas S.A., Evangelos Bardis
+30 210 6220080
e.bardis@sirecled.com

LEBANON

Alta Light, Anthony Baroud
+961 7656 7799
anthony@altalight.com

NETHERLANDS

Design Tales, Pascal Zegers
+316 3888 6666
info@designtales.nl

NORTH & LATIN AMERICA

William Symington
+1 929 294 9574
northamerica@talaled.com

PORTUGAL

Oficinas Gerais, Paulo Cruz
+35 12 2994 2838
paulo.cruz@oficinasgerais.pt

SCANDINAVIA

Roomstore, Thomas Qvortrup or
Lasse Steen Jensen
+45 35 430201
chris@roomstore.dk

SINGAPORE

Journey East, Anita Sam
+65 6473 1693
anita@journeyeast.com

SPAIN

Smon Barcelona, Jim Esteva
+349 3363 0618
jim@smonbcnes

SWITZERLAND

Rotel AG, Matthias Burger
+416 2787 7775
m.burger@rotel.ch

UAE

Speclight Associates, Said Sawaf
+97 15 0656 2383
said.sawaf@speclightassociates.com

UNITED KINGDOM

Retail: Philippa Brown
+44 20 3026 3246
sales@tala.co.uk
retail@tala.co.uk
customerservice@tala.co.uk

Specification: Amy Elstow
+44 20 3026 3246
projects@tala.co.uk

For more information on becoming a distributor for Tala please contact bello@tala.co.uk



Follow our story:

Web: tala.co.uk Instagram: @tala